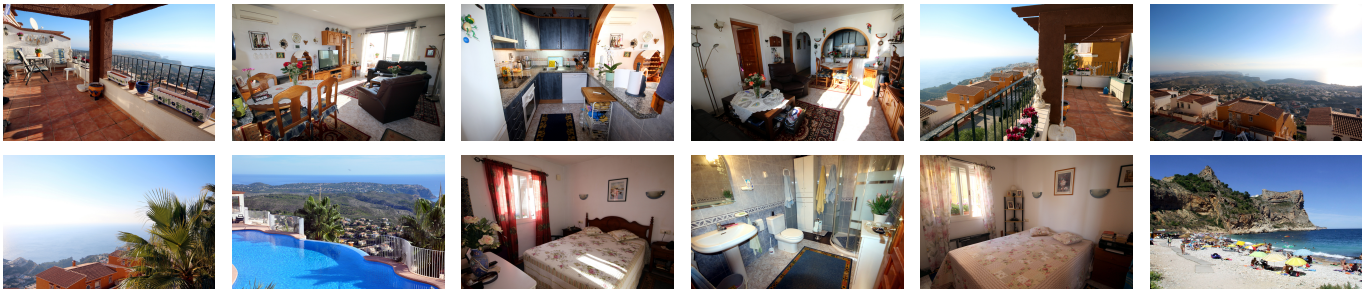


Ref: WW2213E

115,000 €



TWO BEDROOM APARTMENT WITH A SPECTACULAR SEA VIEW

Apartment for sale in Benitachell. A two bedroom, one bathroom pueblo apartment on urbanisation Cumbre del Sol betwixt Moraira and Jávea, just a ten minute drive to both and five minutes to the fantastic Moraig beach. The urbanisation has a large supermarket with a bakery, butchers and newsagents as well as bars, restaurants, a hairdresser and a pharmacy. The apartment is keenly priced for a quick sale priced at around twenty thousand euros less than those recently sold; ideal for buyers who want to put their own mark on a property or to upgrade and sell on. These apartments are stepped down the hillside and all have superb, close 180 degree views of the sea from Moraira to Jávea and to the Balearic Islands. Access from the parking bays is from the uppermost ones down to the lowest. Steps down through communal gardens to the entrance porch. Hallway with three cupboards, one of which houses a washing machine and an electric water heater, and another has a freezer. A bathroom with corner shower cubicle. A rectangular living and dining room with floor to ceiling sliding patio doors to the amazing sea views and the sun terrace which is the full

Calle Iglesia 7, 03724 Moraira (Alicante), España

Phone: +34 966 492 222 Mobile: +34 679 667 626 Email: info@watkinswilson.com

width of the apartment. An open kitchen with a breakfast bar, a dishwasher and the sea view. Both double bedrooms have fitted wardrobes and one also enjoys the view of the sea. The twin communal infinity swimming pools close by are on two different levels with showers and toilets. Hot and cold air conditioning and satellite television. Community charges are 466 euros per year. The entire contents, apart from personal effects can be included in the sale.

Price: 115,000 €

Ref: WW2213E

- Build size: 98 m2
- Plot size: 0 m2
- 2 bedrooms
- 1 bathroom
- Communal pool
- 3 km from beach
- 4 km from town
- Zone: Pueblo Panorama
- Urbanisation: La Cumbre del Sol