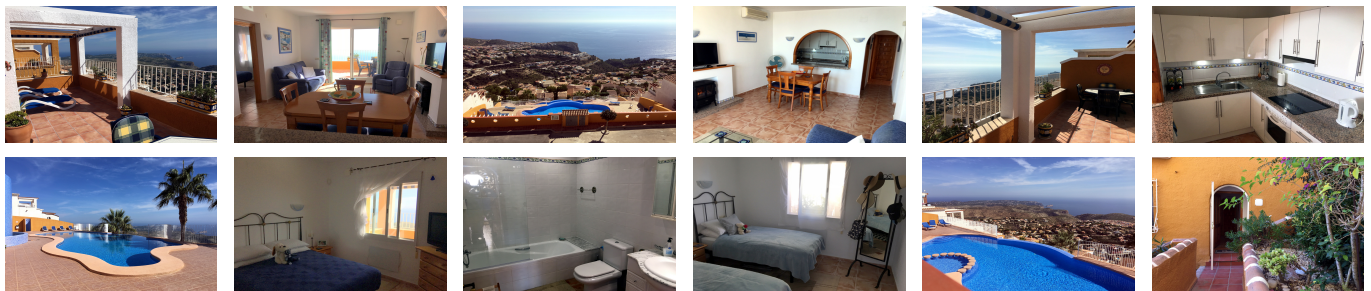


Ref: WW2189E

140,000 €



## DEGREE VIEW OF THE SEA

### IMPECCABLE TWO BEDROOM APARTMENT WITH A CLOSE 180

Apartment for sale in Benitachell. A beautifully presented pueblo style apartment at Pueblo Panorama on urbanisation Cumbre del Sol just outside Moraira. The apartment is on the top of the urbanisation commanding fantastic sea views from Jávea to Moraira. Locally there is a large supermarket with a bakery, butchers, newsagent etc. There are also bars and restaurants. There is a beautiful beach with a summer chiringuito just a five minute drive away. Steps down to the porched entrance. Hall with three cupboards of which one houses the washing machine and hot water boiler. Pristine white bathroom with a shower screened bath. A wide rectangular sitting-dining room with a faux fire place, housing a burning log effect electric fire. An arched breakfast bar separates the open kitchen at the inner end of the living room. The kitchen is all in white with granite work surfaces. Wide double doors open onto the wide sun terrace with a shaded pergola for alfresco dining and a sun bathing area. The two double bedrooms, both with sliding mirrored doors giving the illusion of much more room, are off the living room. The amazing twin swimming pools with a

Calle Iglesia 7, 03724 Moraira (Alicante), España

Phone: +34 966 492 222 Mobile: +34 679 667 626 Email: [info@watkinswilson.com](mailto:info@watkinswilson.com)

cascade are just a short distance away. Hot and cold air conditioning and parking spaces.

**Price: 140,000 €**

**Ref: WW2189E**

- Build size: 98 m2
- Plot size: 0 m2
- 2 bedrooms
- 1 bathroom
- Communal pool
- Zone: Pueblo Panorama
- Urbanisation: La Cumbre del Sol