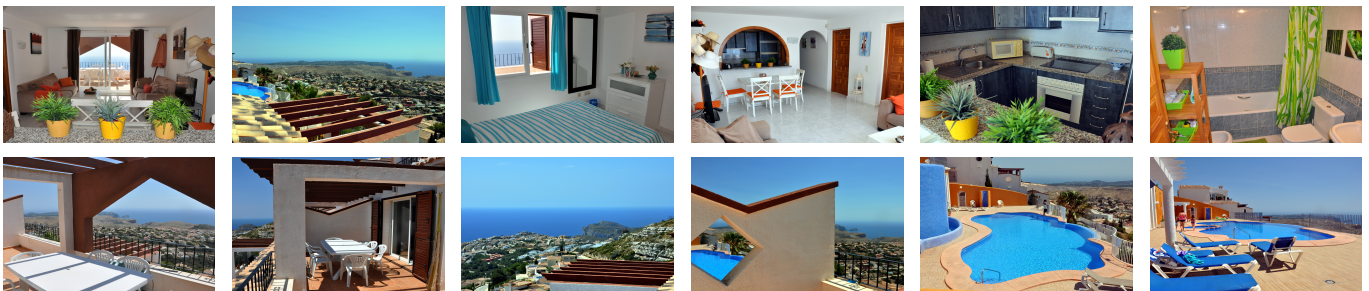


Ref: WW2096E

138,000 €



**Price: 138,000 €**

**COMMUNAL SWIMMING POOLS**

- Build size: 98 m2
- Plot size: 0 m2
- 2 bedrooms
- 1 bathroom
- Communal pool
- Zone: Vistamar
- Urbanisation: La Cumbre del Sol

**SPECTACULAR SEA VIEW, TWO BEDROOM APARTMENT NEXT TO THE**

Apartment for sale in Benitachell. An immaculate end of terrace, two bedroom, one bathroom apartment adjacent to the communal swimming pools at Vistamar on urbanisation Cumbre del Sol just ten minutes from Moraira. A few steps down from the parking to the middle level of these pueblo style apartments stepped down the hillside, affording fantastic 180 degree close sea views from Jávea to Moraira and the Balearic islands. Entrance porch to the entrance door and inner hallway. An air conditioned, rectangular living dining-room with the open kitchen at the inner end and double glass doors and louvred shutter security doors on to the large terrace at the other. Part of this has a pergola for shaded outside dining. Fully fitted kitchen with a dishwasher and breakfast bar. Two double bedrooms, both with sliding door fitted wardrobes and a bathroom with a bath with a shower and bidet. The washing machine is in one of the three hallway cupboards. Magnificent.

Calle Iglesia 7, 03724 Moraira (Alicante), España

Phone: +34 966 492 222 Mobile: +34 679 667 626 Email: [info@watkinswilson.com](mailto:info@watkinswilson.com)